

B. Test Results for Various Objects

Case 1: A sphere

Case 2: Two rectangular blocks (I)

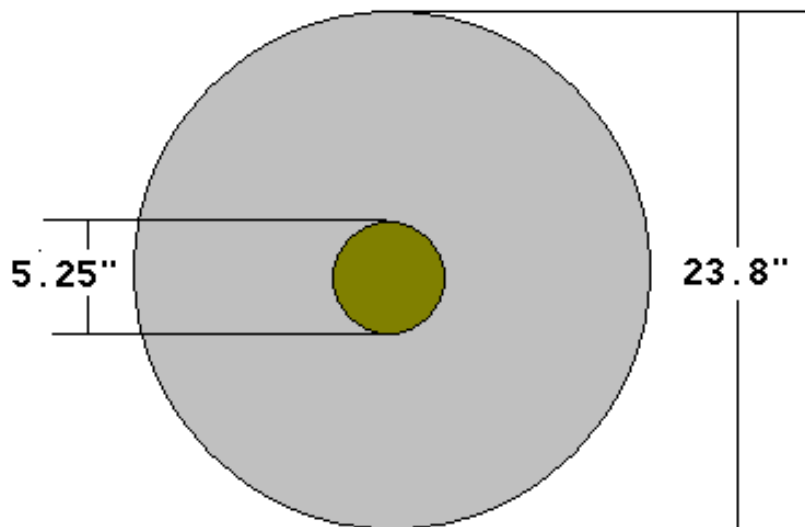
Case 3: Two rectangular blocks (II)

Case 4: An aircraft

Case 5: A carrier ship

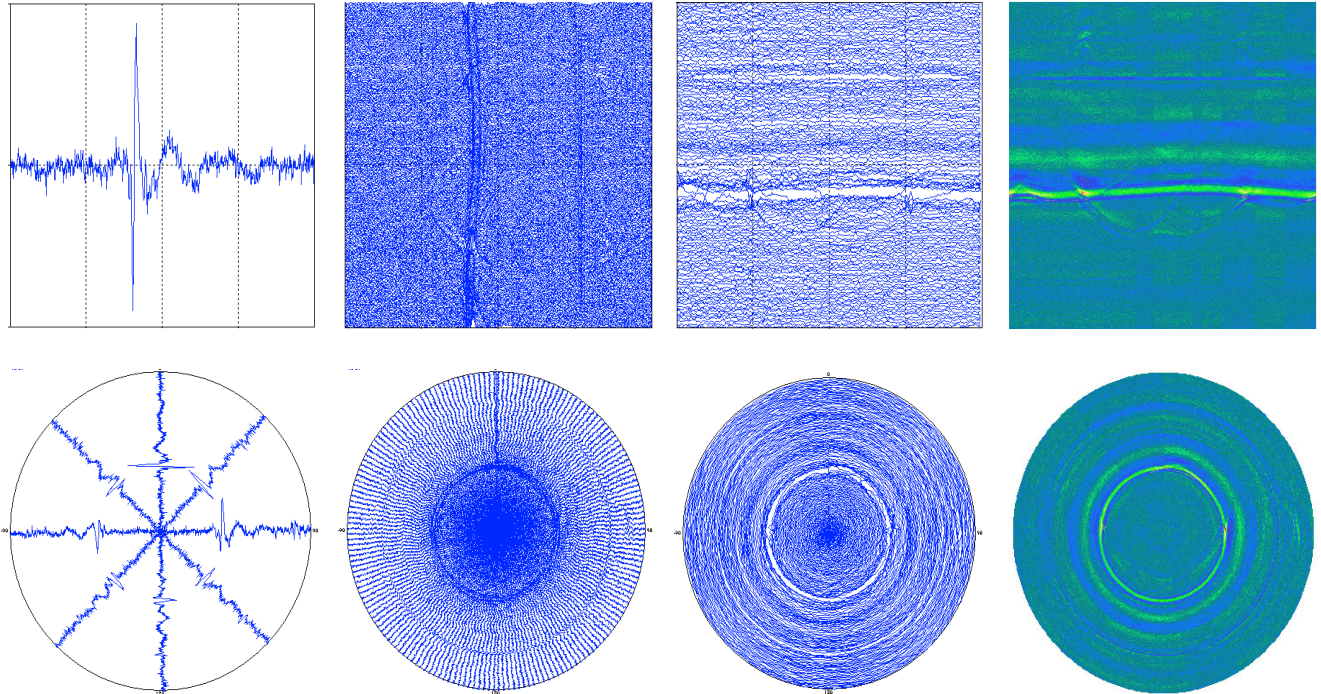
Case 6: A pyramidal horn object

Case 1: A Sphere

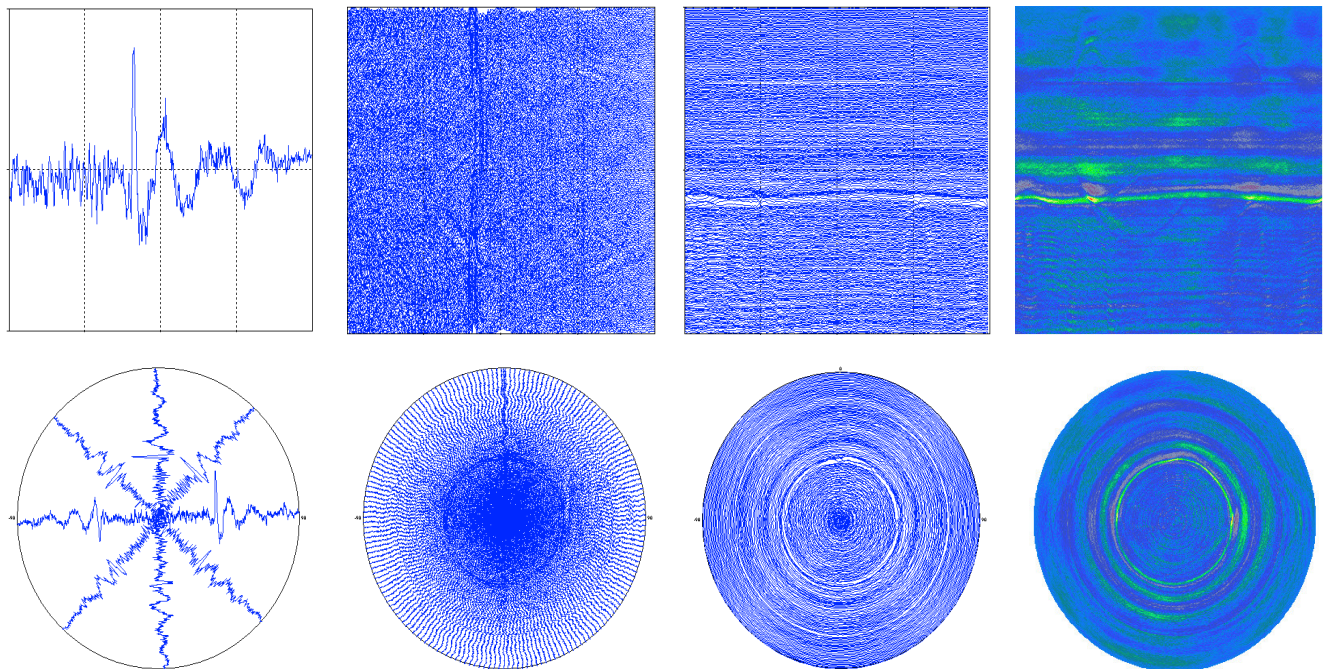


I. RCS Measurement

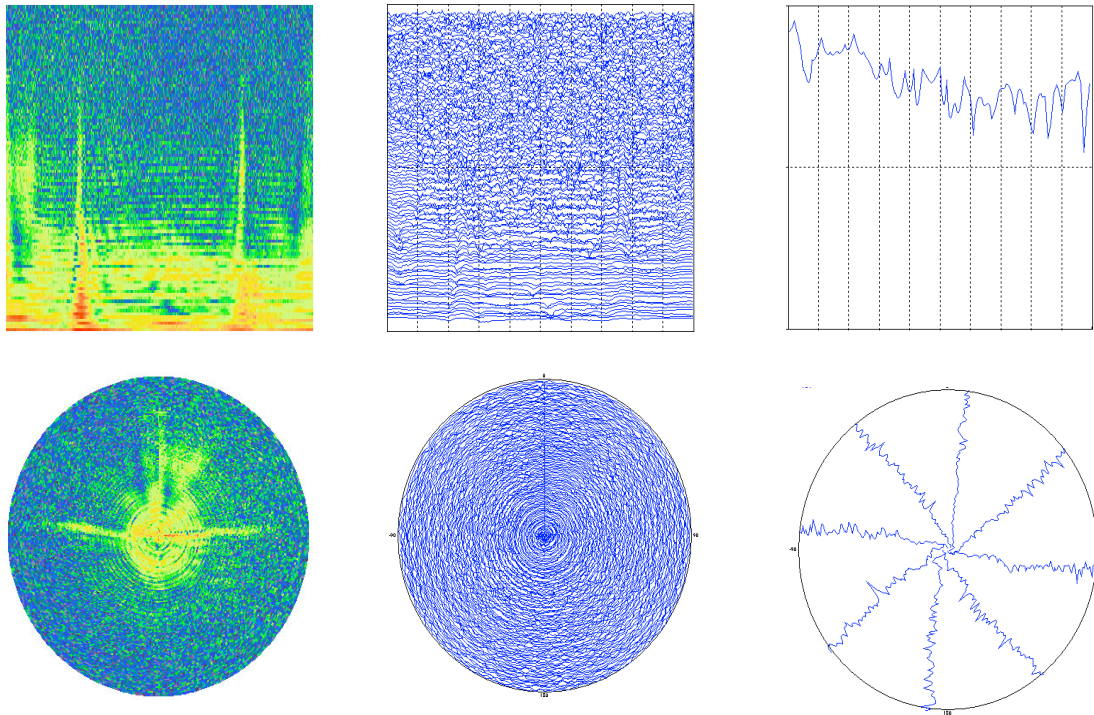
(a) Measured Time-Domain Near-Field RCS



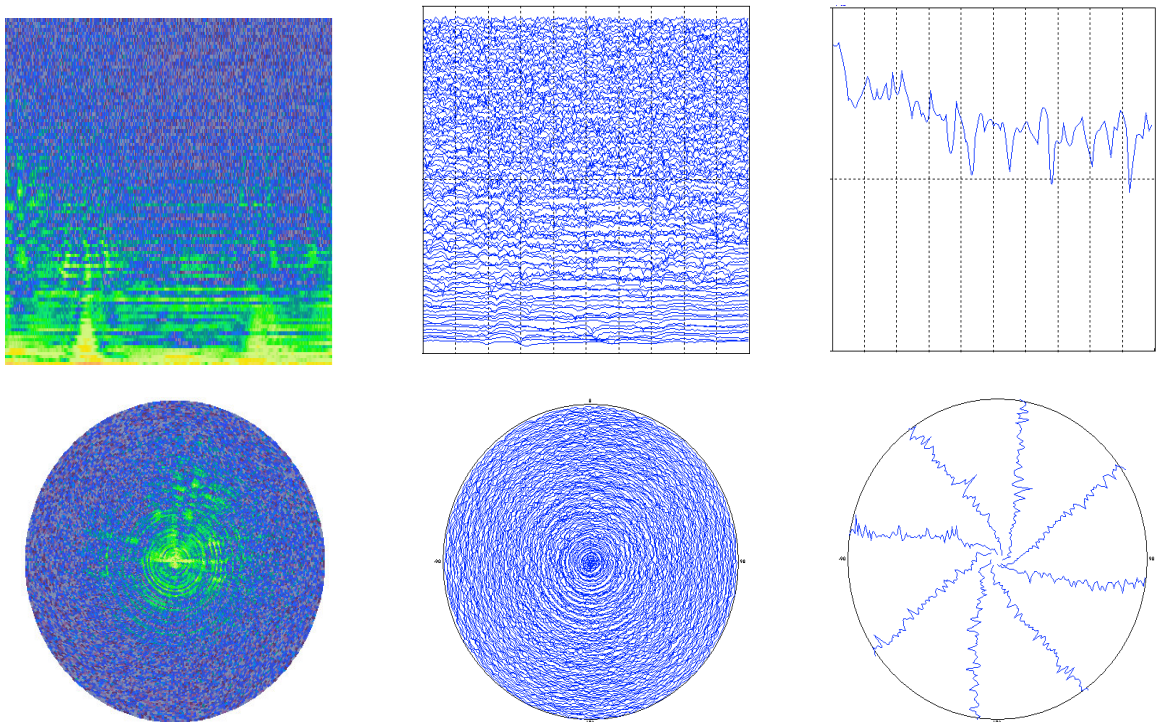
(b) Calculated Time-Domain Far-Field RCS



(c) Calculated Frequency-Domain Near-Field RCS

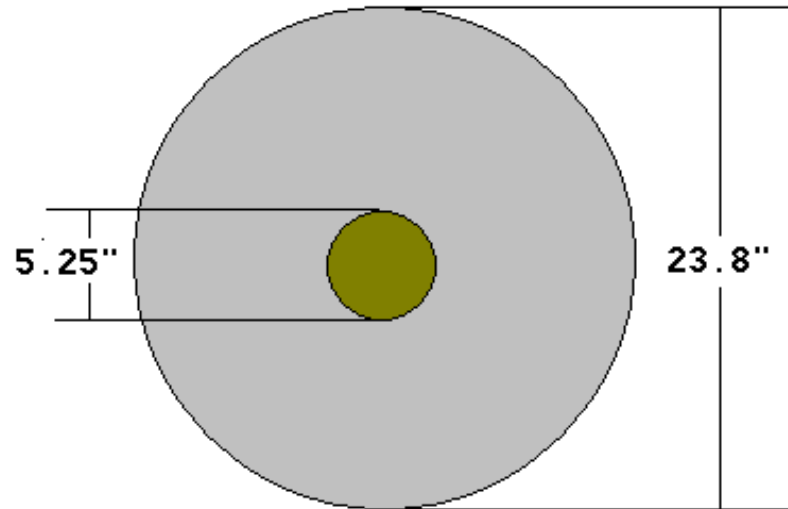


(d) Calculated Frequency-Domain Far-Field RCS



II. ISAR Result

Target Under Test

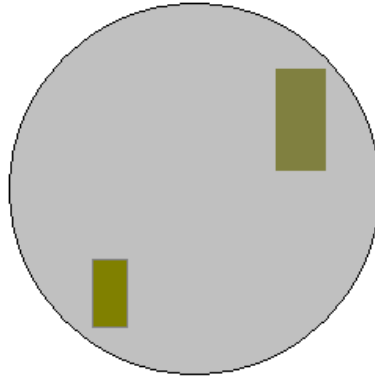


ISAR Image

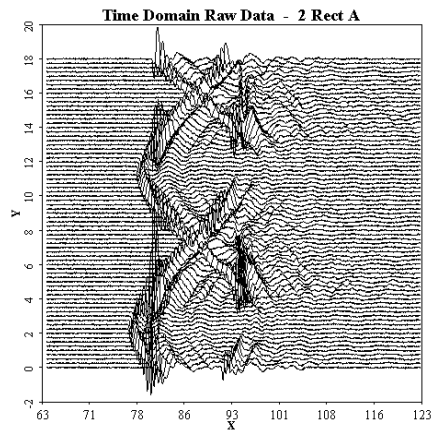


Case 2: Two Rectangular Blocks (I)

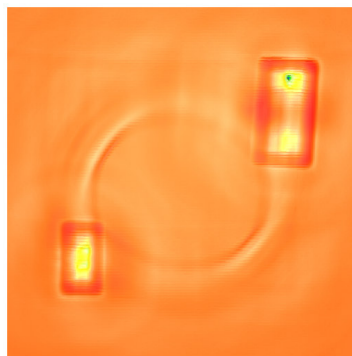
Target Under Test



Measured RCS

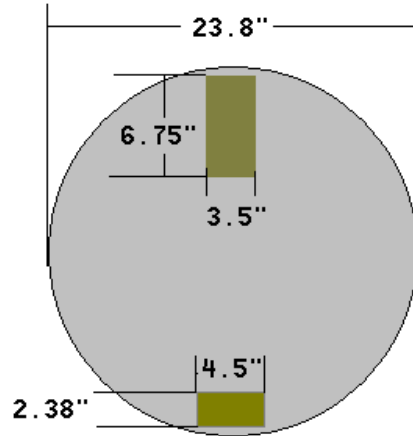


ISAR Image

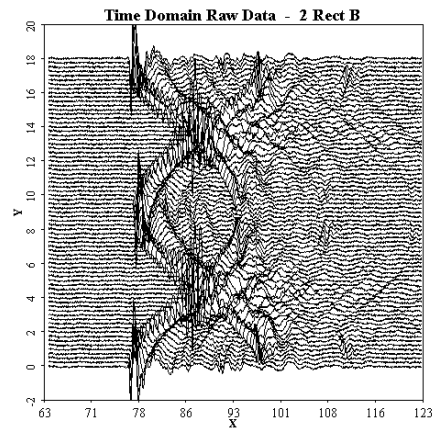


Case 3: Two Rectangular Blocks (II)

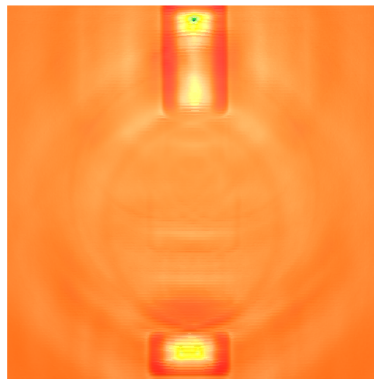
Target Under Test



Measured RCS



ISAR Image

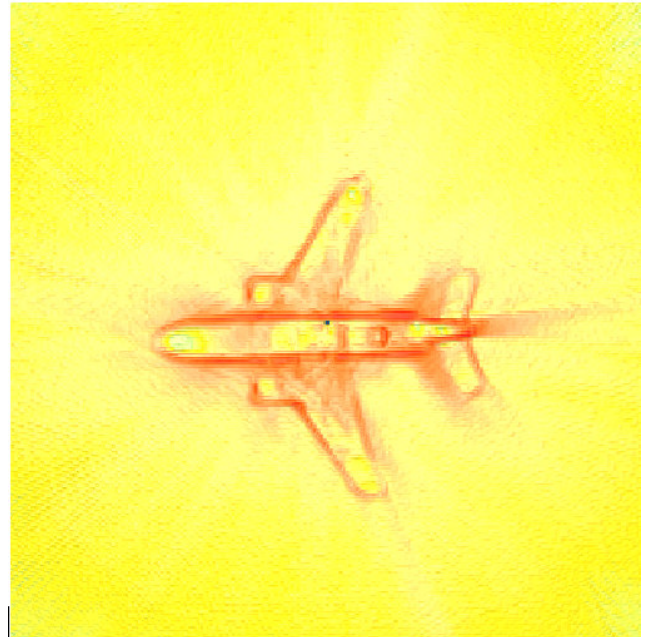


Case 4: An Aircraft

Target Under Test

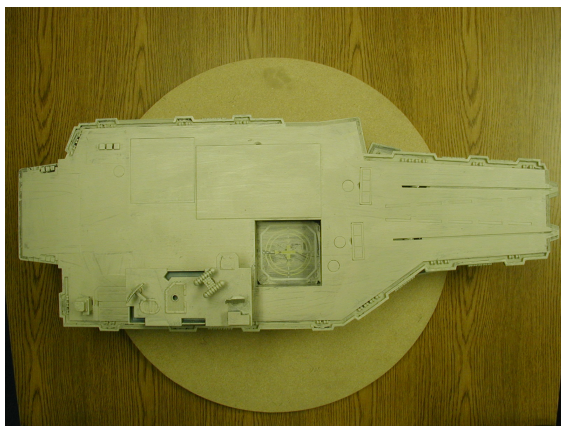


ISAR Image

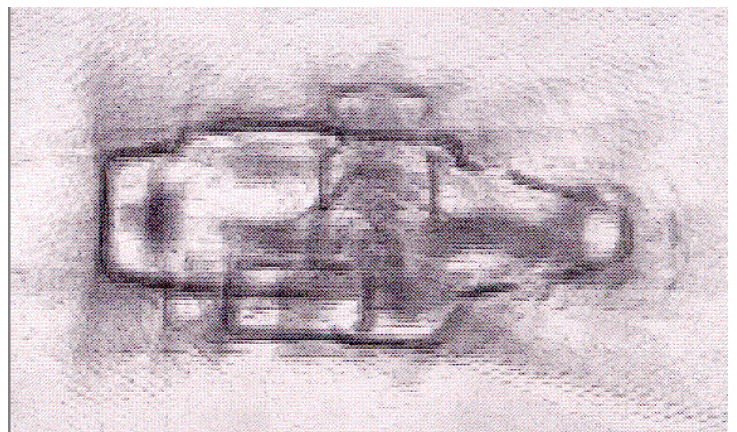


Case 5: A Carrier Ship

Target Under Test



ISAR Image

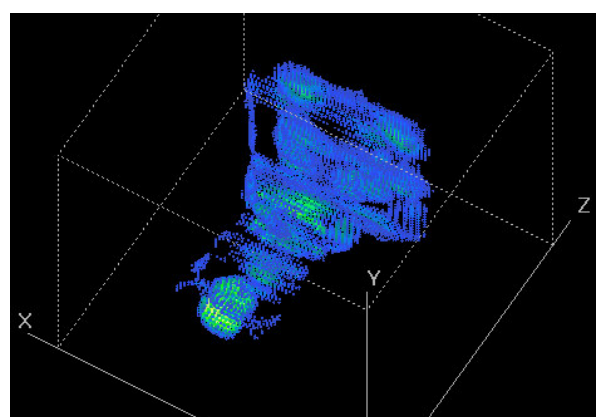
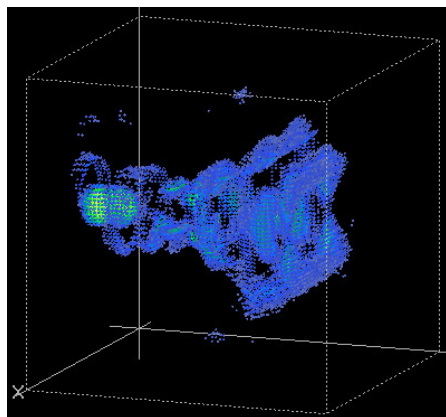
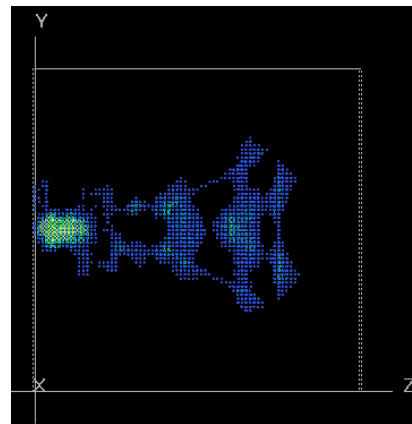
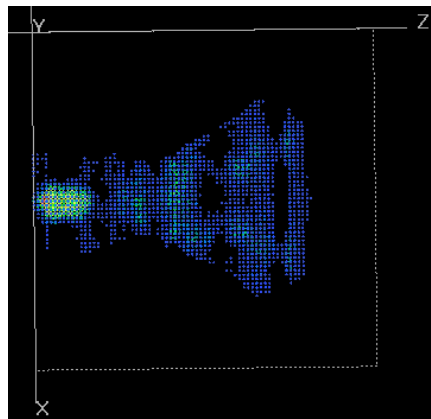


Case 6: A Pyramidal Horn Object

Target Under Test



ISAR Image



ISAR Image Cross Section Cuts

